

TC-3 Instruction for Assembly



1

2



3

4

4



5



5



6

⊙ M8 =2

⚡ 5*40=22

⚡ 8*75=4

⚡ 5*16=12

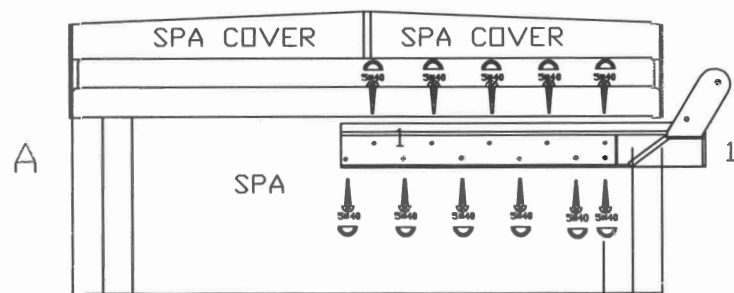
⚡ 8*13=2

⚡ 8*14=8

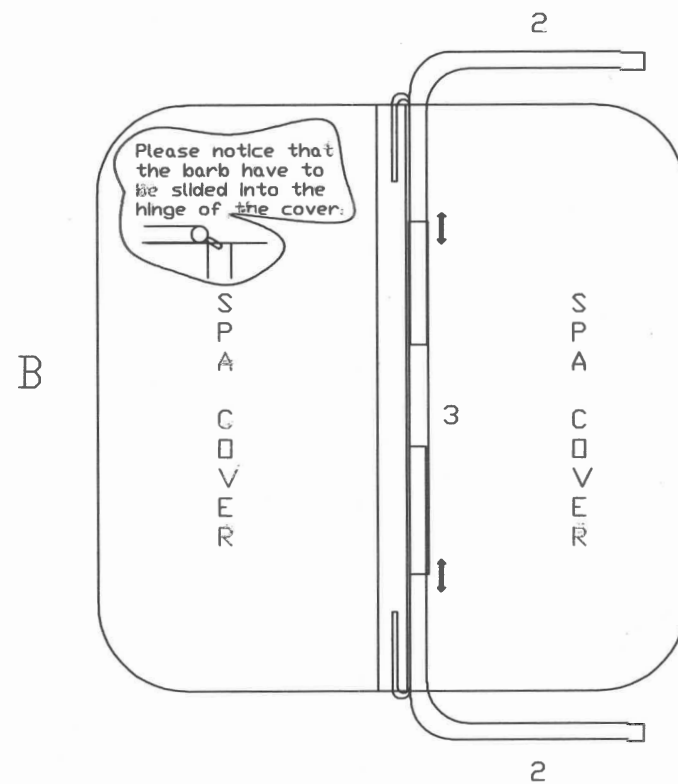
⚡ M5=34

⚡ 4

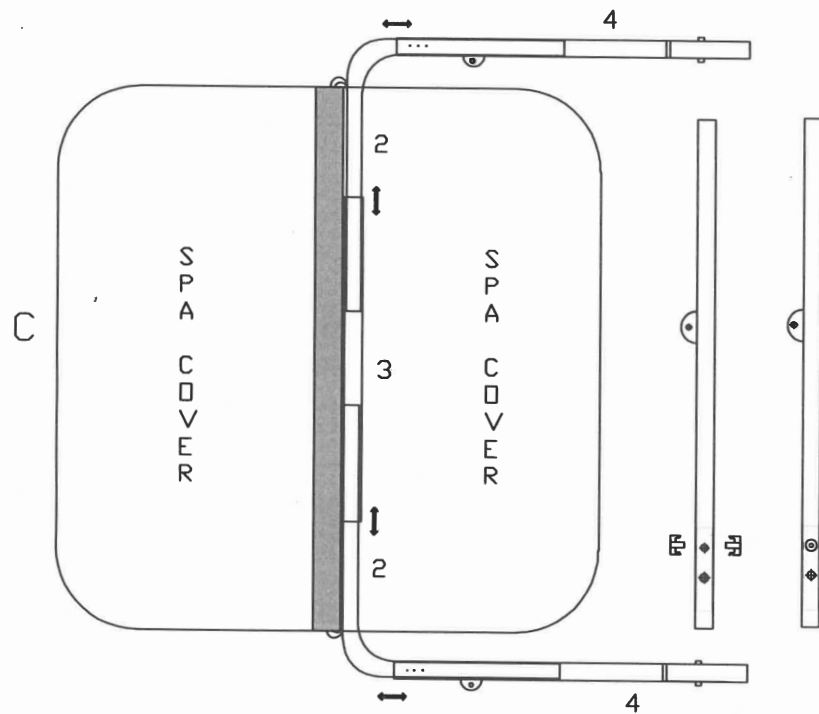
用5×40 螺丝固定零件1 在spa 两侧上。



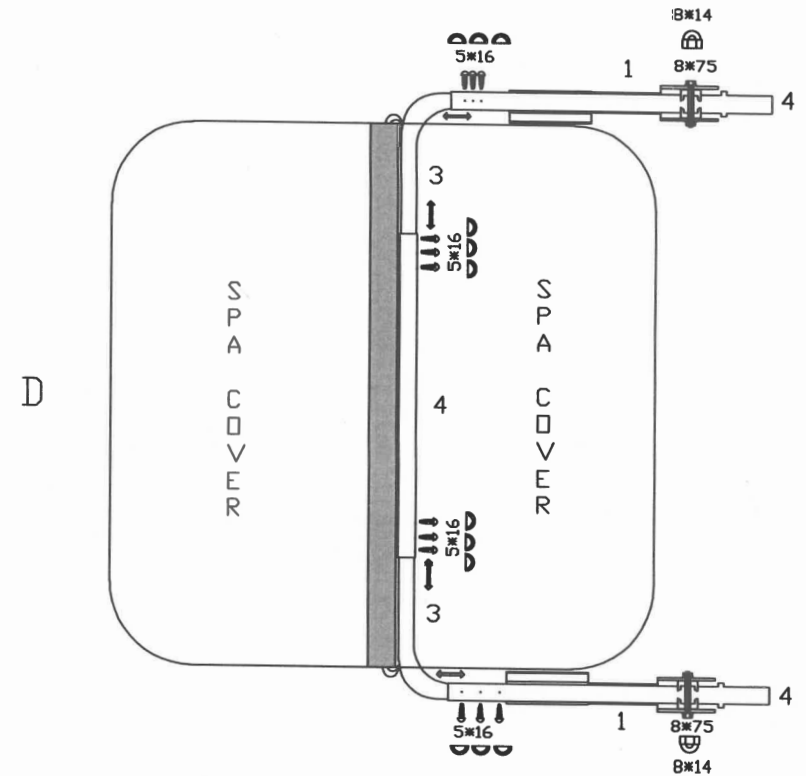
Fix part 1 on both sides of the spa with 5*40 screws.



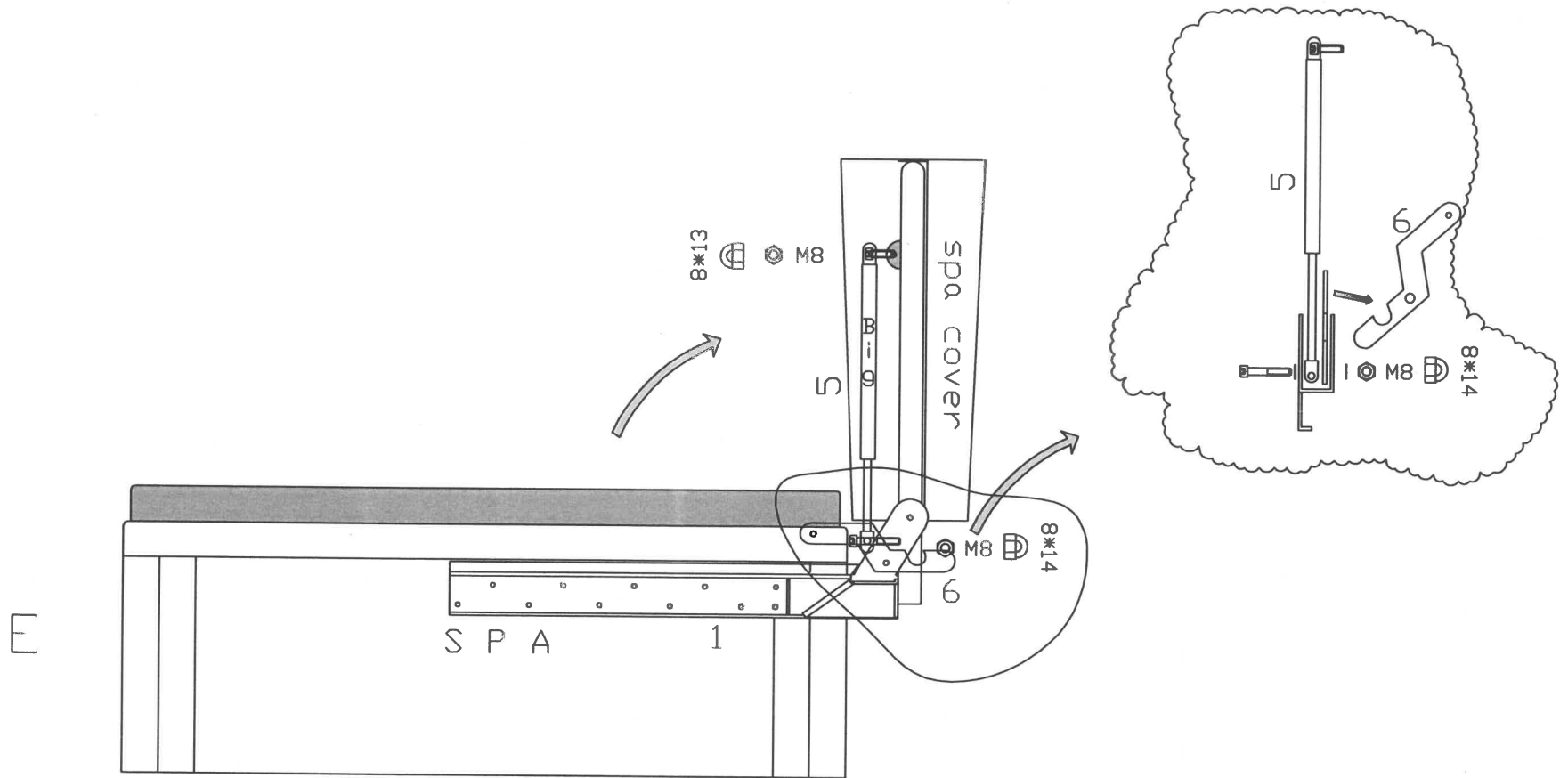
Part 3 and two parts 2 are assembled on the insulation cover.



Two parts 4 are assembled separately on both sides of part 2



After selecting the appropriate position, fix it with screws, and select the screw cap as shown in the figure



After lifting the insulation cover vertically
Reinstall the air support rod